

ASP General Information

Service Installation and Compliance

Alert Number: GI02_24

7 February 2024

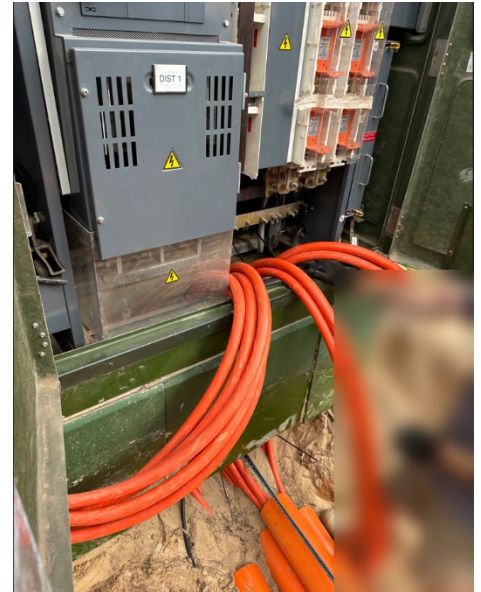
Subject: Guidelines for Connecting Consumer Mains in Substations

Dear ASPs,

Ausgrid is committed to maintaining the highest standards of safety and compliance in all aspects of our electrical infrastructure operations. In line with this commitment, we wish to clarify the protocols and obligations pertaining to the connection of consumer mains within substations, as outlined in our regulatory framework.

According to Clause 15.0 of the Ausgrid ES4 [Accredited Service Provider Authorisation](#) Standard, there are three distinct and approved methodologies for the installation of consumer mains. The standard permits two of these methods to be executed by Level 1 Accredited Service Providers. Conversely, the third method stipulates that the installation must be directly undertaken by Ausgrid personnel.

In instances where an electrical contractor or a Level 2 Accredited Service Provider (ASP/2) is involved, the responsibility to supply and install consumer mains is limited to leaving the cables coiled at an accessible location near the substation, as designated by a Level 1 Accredited Service Provider (ASP/1) or by Ausgrid.



The ASP2 are not authorised to pull the consumers mains into the substation or terminate the consumers mains within the substation. Only persons holding Class 1B and Class 1C authorisation are permitted to terminate cables in Ausgrid substations.

The Equipping Permit

Regarding the issuance of an Equipping Permit, please be advised that it is mandatory for the construction of new mains and apparatus, except in cases where the work is scheduled to be completed within a single day. The Equipping Permit serves as a detailed record of the mains and apparatus designated for connection to the network and must be available on-site before the commencement of any such work.

It is the duty of the Equipping Permit holder to ensure that access to the mains and apparatus is strictly limited to the persons or workgroups listed on the permit.

This is a critical measure to ensure compliance with safety and operational protocols.

We trust that you will adhere to these guidelines meticulously and we thank you for your ongoing cooperation in upholding the integrity and safety of our network infrastructure. Should you require any further clarification or have any queries regarding these procedures, please do not hesitate to contact us.

More information around the rules of working under an equipping permit can be found in Section 5.8 of [Ausgrid's Electrical Safety Rules](#).

Ausgrid
Service Installation & Compliance